



Rabbit anti I κ B α (NFKB1A) Polyclonal Antibody

Alternative Name(s): NFKBI, nuclear factor of kappa light polypeptide gene enhancer in B-cells inhibitor, α

Order Information

- **Description:** I κ B α (NFKB1A)
- **Catalogue:** 602-240
- **Lot:** See label
- **Size:** 100 μ g/200 μ l
- **Host:** Rabbit
- **Clone:** nan
- **Application:** IHC(P), WB
- **Reactivity:** Hu, Ms, Rt

ANTIGEN PREPARATION

A synthetic peptide corresponding to the N-terminus of human I κ B α protein. This sequence is identical within human, mouse, rat, dog and bovine.

BACKGROUND

There are six members in the I κ B family, in which I κ B α is first protein induced by NF- κ B activation. NF- κ B is silenced in the cytoplasm by an inhibitory protein, I κ B. Synthesis of I κ B α is autoregulated. I κ B proteins are phosphorylated by I κ B kinase complex consisting of at least three proteins, IKK1/a, IKK2/b, and IKK3/g. External stimuli such as TNF or other cytokines initiates a signal transduction cascade that leads to the activation of I κ B-kinase complex that specifically phosphorylates I κ B α on Serine-32 and Serine-36. Phosphorylation of these sites leads to ubiquitination of I κ B α and subsequent degradation by the 26 S proteasome.

PURIFICATION

The Rabbit IgG is purified by Epitope Affinity Purification

FORMULATION

This affinity purified antibody is supplied in sterile Phosphatebuffered saline (pH7.2) containing antibody stabilizer

SPECIFICITY

This antibody recognizes ~42 kDa of human I κ B α . This antibody also reacts with rat and mouse. The other species are not tested.

STORAGE

The antibodies are stable for 24 months from date of receipt when stored at -20 $^{\circ}$ C to -70 $^{\circ}$ C. The antibodies can be stored at 2 $^{\circ}$ C-8 $^{\circ}$ C for three month without detectable loss of activity. Avoid repeated freezing-thawing cycles.

APPLICATIONS/SUGGESTED WORKING DILUTIONS*

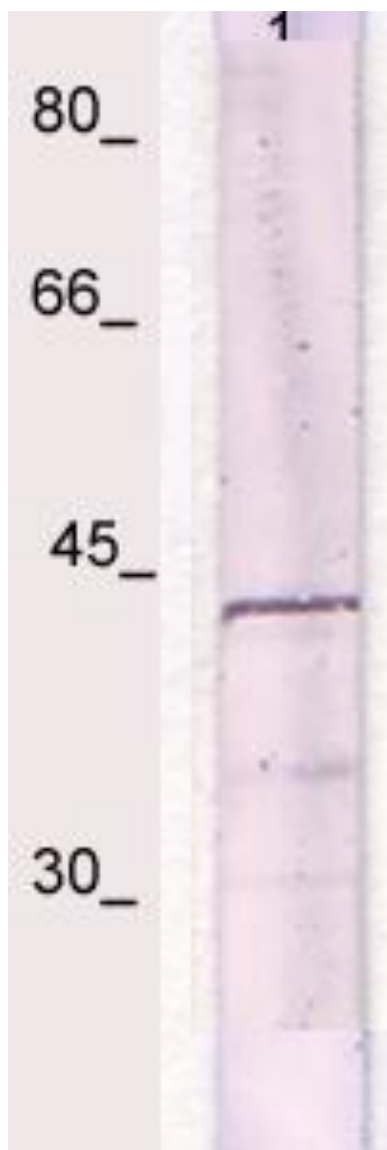
- Western Blot: 0.1-1 μ g/ml
- ELISA: 0.01-0.1 μ g/ml
- Immunoprecipitation: 2-5 μ g/ml
- IHC: 2-10 μ g/ml
- Flow cytometry: Not tested
- Molecular Weight: 160.0
- Positive Control: Kidney Tissue
- Cellular Location: Cell Membrane

*Optimal dilutions should be determined by researchers for the specific applications.

FOR RESEARCH USE ONLY.

AbboMax, Inc 2528 Qume Drive, Suite 8, San Jose, California 95131, USA
1 408-573-1898 (Tel). 1 408-573-1858 (Fax). www.abbomax.com info@abbomax.com

DATA ATTACHMENTS



Western Blot: The whole cell lysate derived from Jurkat cells was immunoblotted by Rabbit anti-I κ B α (Cat#602-240) at 1:500. An immune-reactive band is observed around ~42kDa.

REFERENCES

FOR RESEARCH USE ONLY.

AbboMax, Inc 2528 Qume Drive, Suite 8, San Jose, California 95131, USA
1 408-573-1898 (Tel). 1 408-573-1858 (Fax). www.abbomax.com info@abbomax.com